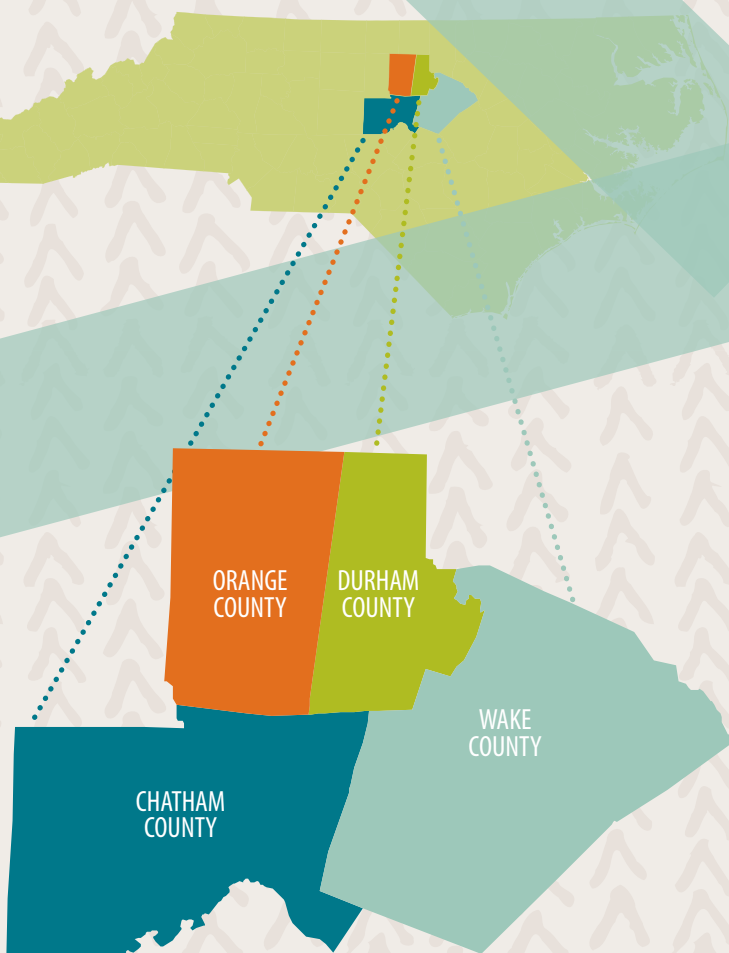


Unfolding the Full Story of the Triangle



A REGION OF OPPORTUNITY

1990



2010

85%

POPULATION GROWTH IN THE TRIANGLE
(737,825 to 1,365,886)



POPULATION GROWTH FROM 1990 TO 2010
by county

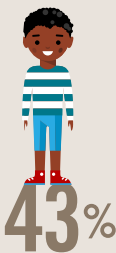


53%

TRIANGLE RESIDENTS UNDER THE AGE OF 5
WHO ARE CHILDREN OF COLOR

2014

Chatham County



Orange County



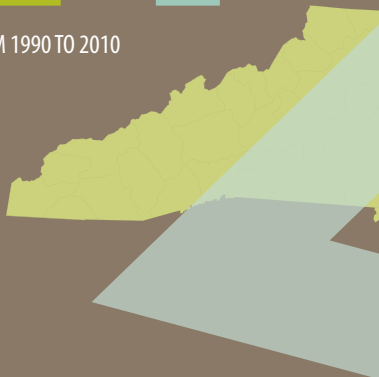
Durham County



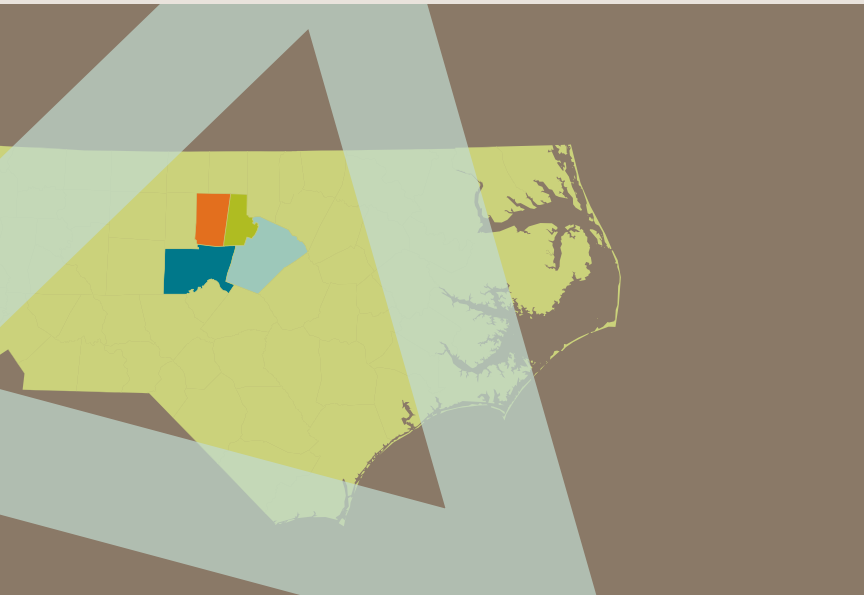
Wake County



RESIDENTS UNDER THE AGE OF 5
WHO ARE CHILDREN OF COLOR
by county, 2014

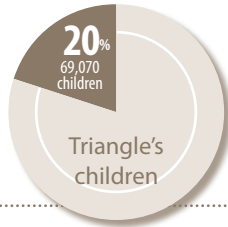
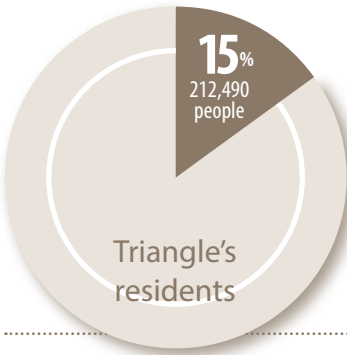


Our region has undergone a remarkable demographic, cultural, and economic transformation over the past 25 years, and we continue to grow and diversify at breakneck speed. Judging by many indicators, the Triangle is a prosperous place—topping many “best of” lists—but we know that not everyone is thriving here. Let’s learn together...



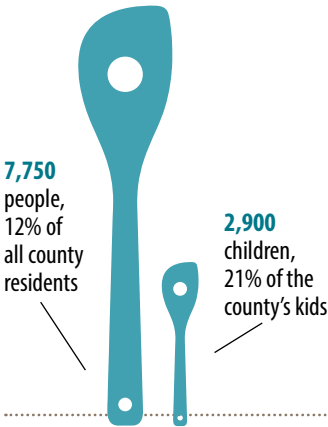
Food Security

OVERALL TRIANGLE REGION

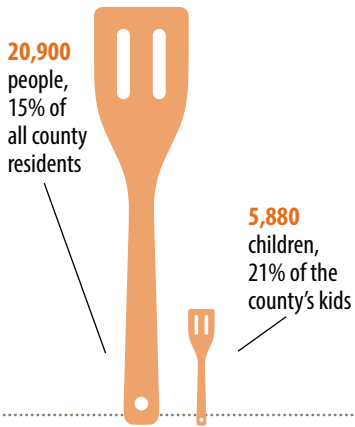


AT RISK OF HUNGER, or HUNGRY, in 2013

Chatham County

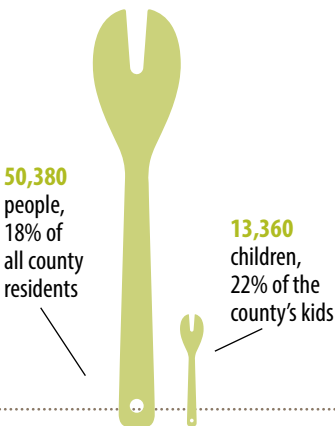


Orange County

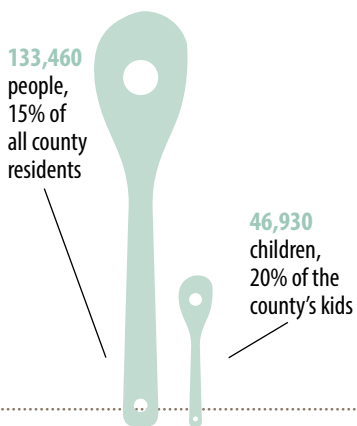


AT RISK OF HUNGER, or HUNGRY, in 2013

Durham County



Wake County



AT RISK OF HUNGER, or HUNGRY, in 2013

We envision a Triangle where everyone has the opportunity to thrive.

What is the gap between our vision, and the reality?

How can we interrupt the vicious cycle of inequity in order to fulfill the promise of equal opportunity and shared prosperity?

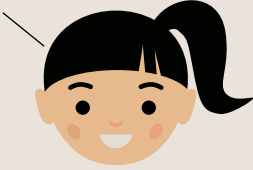
The building blocks of opportunity and prosperity are not accessible to everyone. Poverty and economic inequality, fed by racism, sexism, and other structural barriers, live in our region too.



Education

OVERALL TRIANGLE REGION

84%



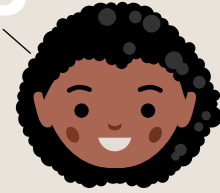
WHITE

45%



BLACK or African-American

43%



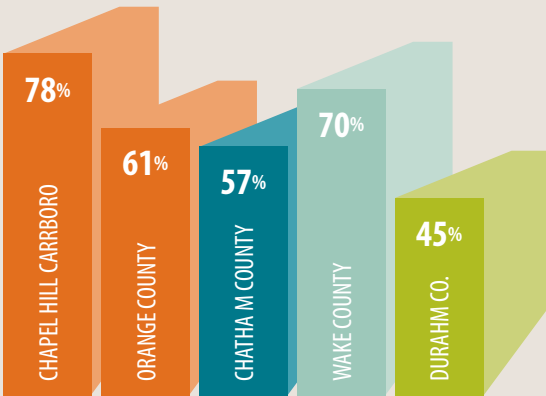
HISPANIC

87%



ASIAN

PUBLIC THIRD-GRADE STUDENTS GRADE-LEVEL PROFICIENT IN READING, 2014–2015



PUBLIC THIRD-GRADE STUDENTS GRADE-LEVEL PROFICIENT IN READING by school district, in school year 2014–2015

Food Security

Why Does This Matter? Children and families who are hungry cannot focus at school or work, and struggle to meet milestones of success, or provide adequately for their families.

Education

Why Does This Matter? Reading is an essential skill for school success—which helps determine the future success of our region's residence, economy, and civic infrastructure.

What We See.

We live in a region with an abundance of assets—natural, creative, and most of all, human.

Yet, not everyone has the same opportunity to be successful. We see that outcome gaps are widening, particularly along racial and economic lines.

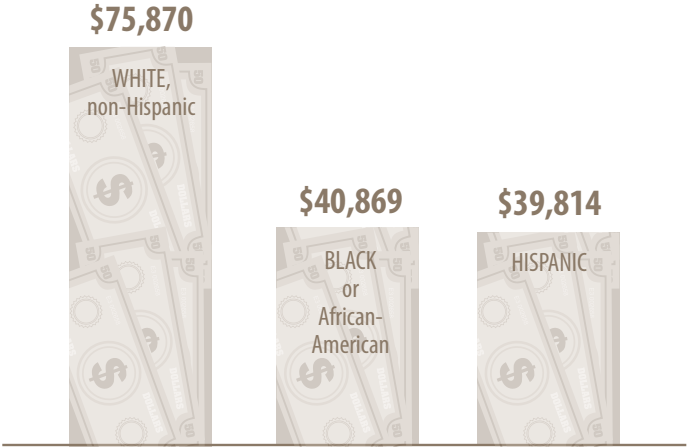
We see that our growth isn't slowing down. We see that our counties share similar issues, but are also very diverse.

And we see that the pillars to success shown here are connected—that one affects the other, and to make change, we must change the entire system.

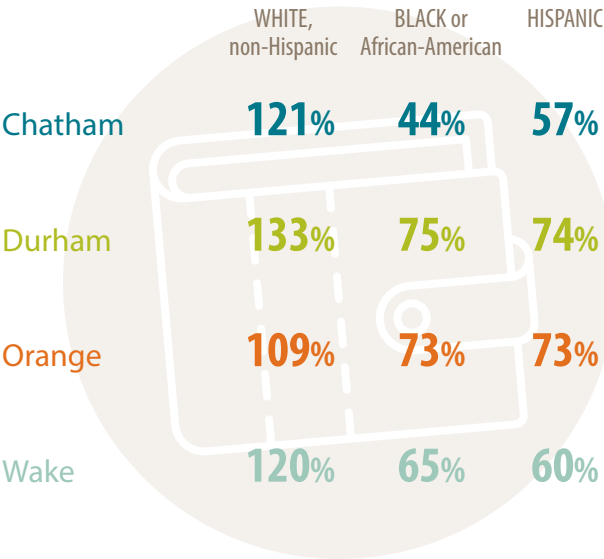


Income

OVERALL TRIANGLE REGION



MEDIAN HOUSEHOLD INCOME IN 2014 IN DOLLARS



MEDIAN HOUSEHOLD INCOME AS A SHARE OF COUNTY MEDIAN, in 2014

Income

Why Does This Matter? All families require adequate income to meet their needs, to ensure upward mobility, and to invest in their children's future.

Housing

Why Does This Matter? Without stable and affordable housing, families can't get a foothold in community, access other resources and opportunities, or build social networks.


Source: US Census Bureau, American Community Survey, One-Year Estimates, 2014

How Can We Help?

In order to make the greatest impact, donors, nonprofits, businesses, government officials, and community leaders must build skill and confidence, and a collective will, to identify, and ultimately transform, structures that unfairly benefit some while burdening others.

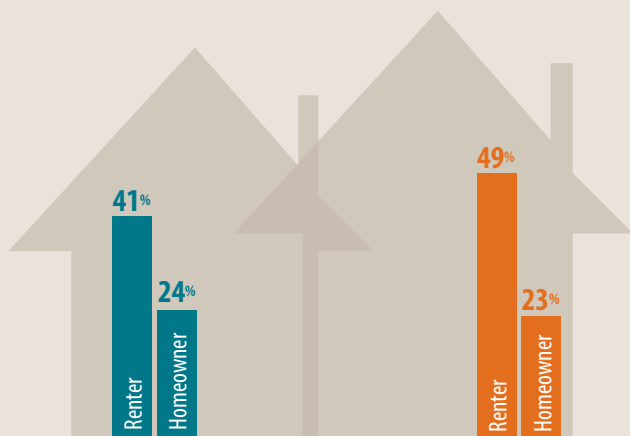
We are not the expert here, and are embarking on an education of sorts, to learn about how we can help, and we ask you to do the same.

**Let's learn together.
It's time to change.
Let's unite in our sense
of urgency and figure
out, together, how we
can each help to close
this gap.**



Housing

OVERALL TRIANGLE REGION

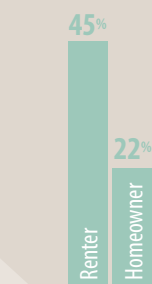


Chatham County

Orange County



Durham County



Wake County

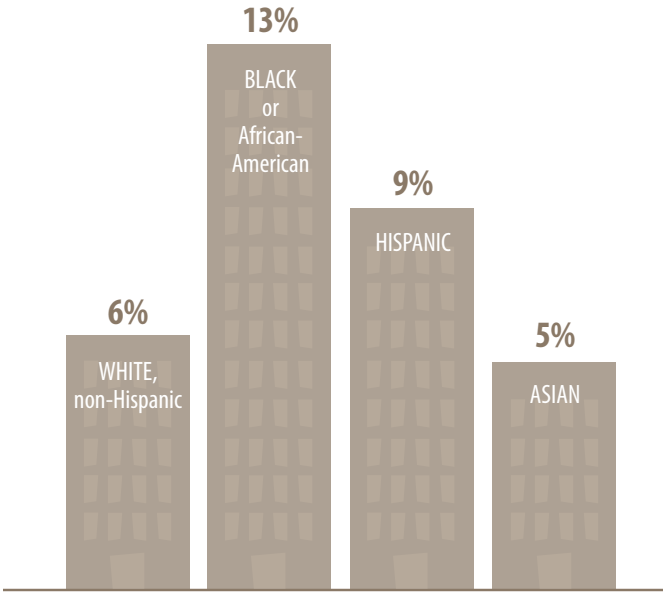
RENTER/HOMEOWNER HOUSEHOLDS, ON AVERAGE,
WHO SPEND AT LEAST 30% OF THEIR INCOMES ON HOUSING COSTS
by county, between 2010–2014

Employment

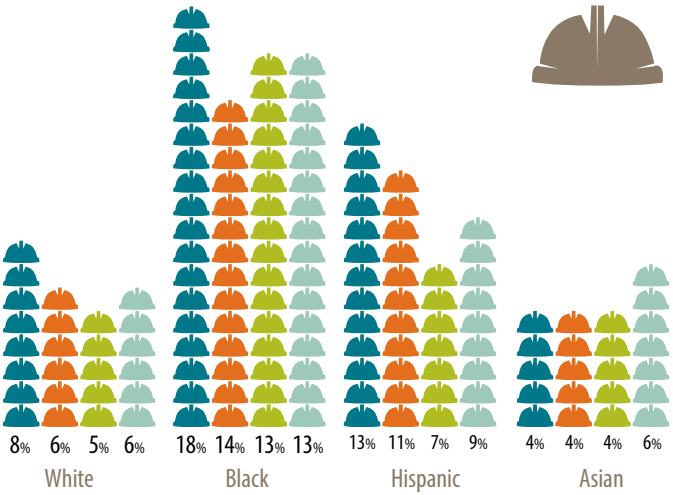
Why Does This Matter? Lack of employment opportunities hurts individuals and families, and denies our whole community of everyone's full talents and potential.

Employment

OVERALL TRIANGLE REGION



AVERAGE TRIANGLE UNEMPLOYMENT RATES BETWEEN 2010–2014



AVERAGE TRIANGLE UNEMPLOYMENT RATES by county, between 2010–2014

What Matters

TRIANGLE COMMUNITY
FOUNDATION

**“Not everything that can be counted counts,
and not everything that counts can be counted.”**
—Einstein

In reference to the data in this document, and data in general, it is important to note that one cannot learn everything there is to know from numbers, and that they are a tool that we use to paint a picture, and tell a story. While the Foundation does not have programs that fund all of the specific issues we raise up here today, we believe that each of them are connected and necessary to achieve success, and intend to spark a community conversation about change. We hope you'll join us.



#whatmatters **@trianglecf** **@TriComFdn** **www.trianglecf.org**

The Foundation would like to thank John Quintero, South by North Strategies, LTD, and Gita Gulati-Partee, OpenSource Leadership Strategies, for their assistance and leadership on this project.

